



**GANPATI INFRASTRUCTURE
DEVELOPMENT COMPANY LTD. (GIDCO)**

Corp. Office: Ganpati square 94,
Vijay Nagar Colony, Agra 282004

Lucknow Address - Pocket F, Vibuti Khand,
Gomti Nagar, Lucknow

Helpline No. - 999 777 0002

www.ganpatigroupindia.com

Sage Designsin | 9810038807



The Rise of Emerging Service Suites





Capital Court is a world-class complex, strategically situated in the heart of Vibhuti Khand, Gomti Nagar, Lucknow, offering unparalleled proximity to high-class residential neighborhoods as well as premium retail and office spaces. This prime location fosters a sophisticated environment, making it an ideal choice for businesses, professionals, and entrepreneurs seeking a perfect blend of luxury, convenience, and functionality.

The complex is well-connected to key areas of the city, ensuring seamless access for both residents and businesses. Its central position makes it an ideal hub for high-profile ventures and thriving enterprises. Designed with the needs of modern businesses in mind, **Capital Court** offers an upscale, dynamic atmosphere that encourages collaboration, growth, and success.

Whether for work, meetings or leisure, the surrounding environment complements the complex's world-class amenities, creating a perfect balance of productivity and relaxation. With its top-tier business infrastructure, elegant living spaces, and excellent accessibility, **Capital Court** is the premium choice for those seeking to succeed in an urban, high-end setting.



Business Suites offer a seamless blend of work and living spaces, designed for entrepreneurs, professionals, and business owners who seek to work and reside within the same environment. This innovative concept enhances productivity, convenience, and leisure, by integrating high-end office facilities with meticulously crafted residential units, all complemented by a world-class clubhouse.

This combination allows for a balanced, efficient lifestyle, eliminating the need for commuting between separate locations. With workspaces and relaxation zones just steps away, professionals can focus on their business goals while enjoying the comfort and luxury of their living spaces. Whether it's for meetings, work, or unwinding, the design fosters a dynamic, productive lifestyle, effortlessly blending business and leisure in one harmonious setting.





1 ECO- FRIENDLY
TERRAIN



2 SMART
NEIGHBOURHOOD



3 EASY ACCESS
TO AIRPORT



4 METRO
CONNECTIVITY



5 SMOOTH ROAD
CONNECTIVITY

Surrounded
By Thriving
Commercial
Atmosphere of

Business  Suites
Designed for business brilliance.

Lorem Ipsum is simply dummy text of the printing and typesetting industry. Lorem Ipsum has been the industry's standard dummy text ever since the 1500s, when an unknown printer took a galley of type and scrambled it to make a type specimen book. It has survived not only five centuries, but also the leap into electronic typesetting, remaining essentially unchanged. It was popularised in the 1960s with the release of Letraset sheets containing Lorem Ipsum passages, and more recently with desktop publishing software like Aldus PageMaker including versions of Lorem Ipsum

Hotel & Banquet Drop off Plaza





Business Suites
Designed for business brilliance.

Entrance Lobby





Business Suits Entry Plaza



Business Suits - Live & Work Concept View







Table Tennis



Salons



Gymnasium



Billiards



Dart Board



Foosball

SPECIFICATIONS

EXTERNAL SPECIFICATIONS

RCC frame earthquake resistant foundation and structure with MIVAN construction (Malaysian Technology)
Textured Paint of exterior grade on walls and MS/SS/TG railing on Specific sections as per Architect Design.

ELEVATORS

Upto 7 elevators (including service lift) of KONE/Mitsubishi/Schindler/Otis or equivalent will be provided with automatic opening doors in each tower.

STAIRCASE

- Polished granite staircase with combination of tiles in lobby.
- Handrail of MS/SS/TG will be provided in staircases.
- Wall & Ceiling finishes with Premium emulsion paint or as per Architectural Design.

INTERNAL SPECIFICATIONS

DOORS

- Main Doors – With branded digital locks like Godrej/Yale/Doorset.
- Bathroom Doors - Inside & outside veneered/Laminate/Duco paints finish with gate locks.

- Bathroom Doors - Inside- laminate Finish & Outside- Veneered finish/ Laminate/Duco paints with locks.

FLOORING

- LVT a type of flooring that is made out of synthetic materials such as fibreglass, PVC vinyl, and a plasticizer. It's especially durable because it's made from multiple layers and has a thick core to keep you comfortable when you're walking. Vinyl flooring is especially celebrated for its resistance to moisture.

WALLS

- POP Punning/ Level plast with premium emulsion paint.

CEILING

- POP illuminated false Ceiling & Premium emulsion paint.

AIR CONDITIONG

- Provision of VRV systems will be provided like Mitsubishi/Daiken.

KITCHEN FINISEHERS

CABINETS

- Premium Modular Kitchen cabinets of appropriate finishes

- Countertop will be Granite/Stone/Quartz & Premium composite marble tiles/Lacquered glass upto 2ft above counter.

WASHROOMS

- Fully Equipped washrooms with branded CP & sanitary fittings, wall hanging commode (Jaguar/Grohe/Kohler or equivalent) including looking mirror, Granite Countertop washbasin on vanity unit with washbasin & exhaust fans etc. will be provided in all washrooms.

OTHER SPECIFICATIONS

ELECTRICAL FITTINGS

- All electrical wiring in concealed conduits, provision of adequate light and power points such as Telephone, Internet, Intercom, DTH (Havells/RR cable/Polycab/Filolex).
- Modular plastic Switches & DB box will be of (LeGrand/Norisys or equivalent)
- Protective MCB's will be of Havells/Legrand or equivalent.

GENRATOR

- Kirloskar/Cummins/Crompton Greaves or equivalent silent generator with the capacity decided by the electrical consultant.

FIRE SAFETY

- Firefighting system with Sprinklers, smoke detection system will be as per norms.

STP RAIN WATER HARVESTING

- As per Govt. norms.

RECEPTION

- Centralized Air-Conditioned & well Equipped Reception area with elegant ambience as per Architect & Interior designer.

CLUB

- Centralized Air-Conditioned clubhouse with delightful ambience as per Architect & Interior designer.

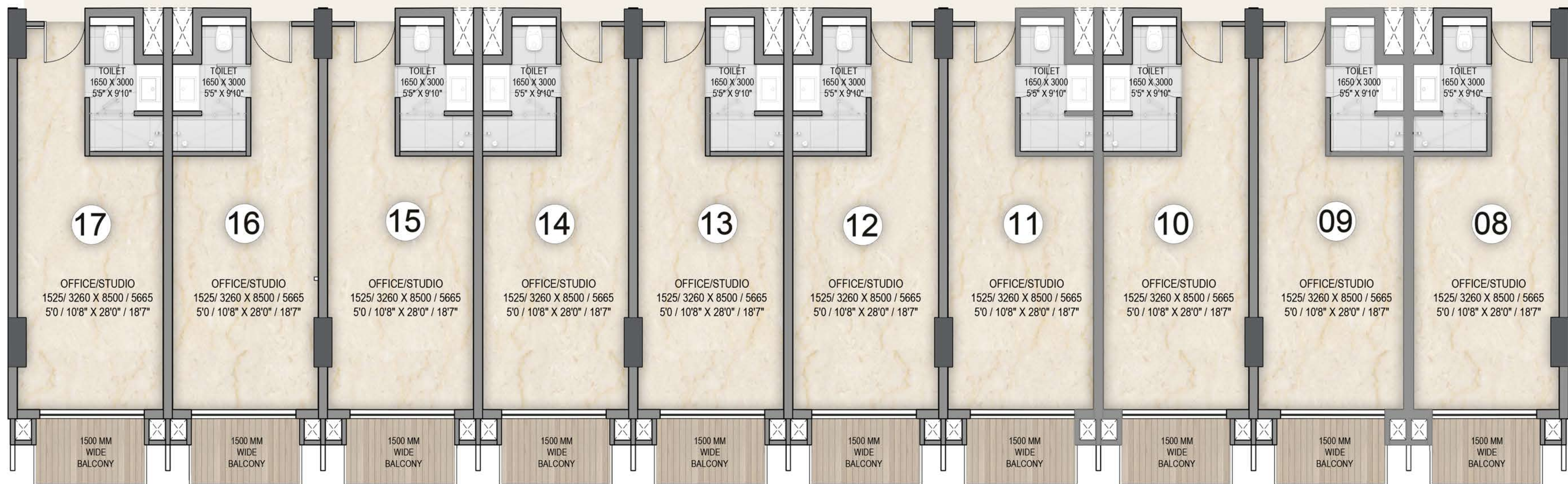
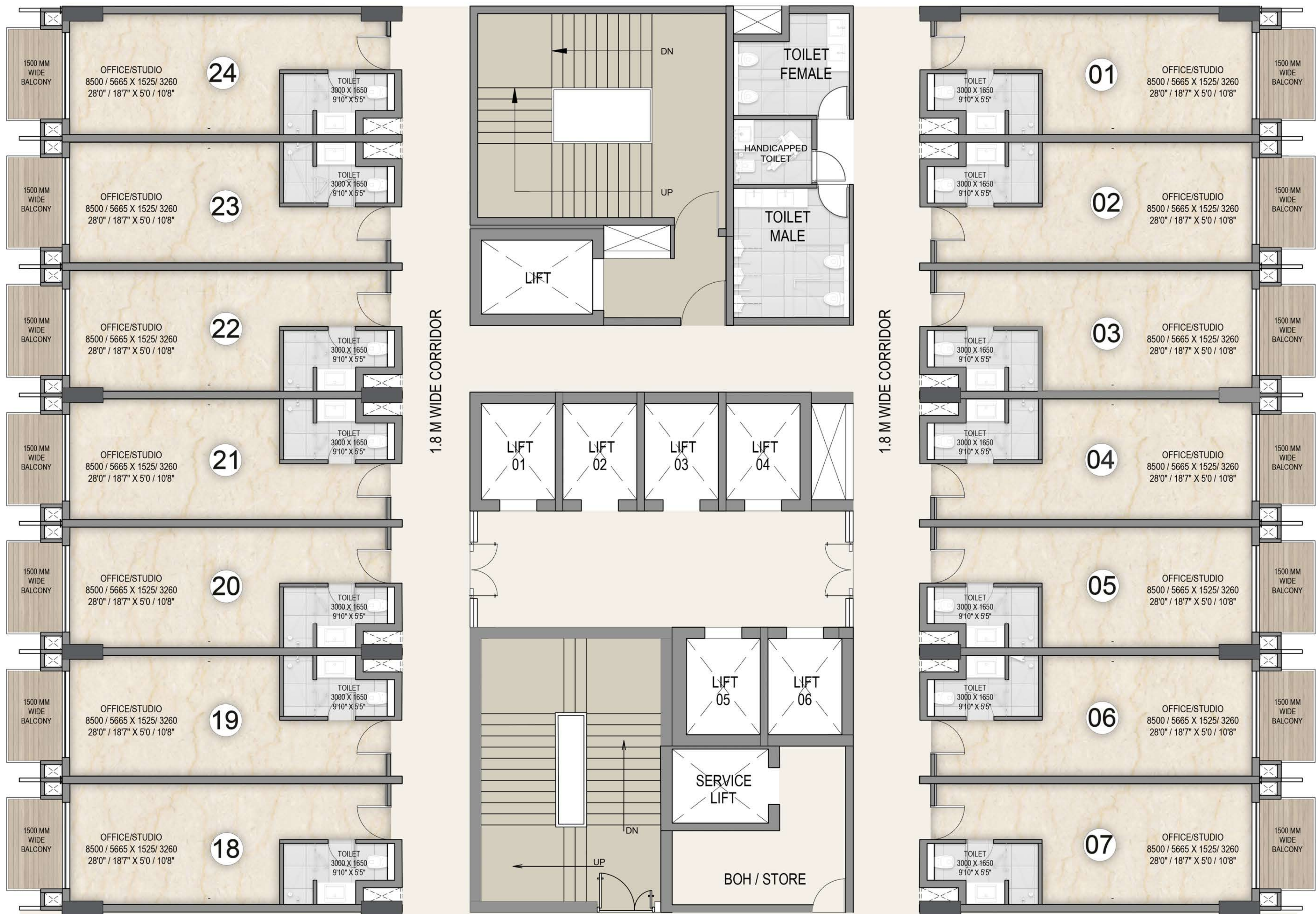
GYM

- Fully equipped Gym with latest machines & shower area etc.
- All the above Specifications are indicative as they are envisaged at the time of design and before commencement of construction final specification and brands may vary based on availability & design.

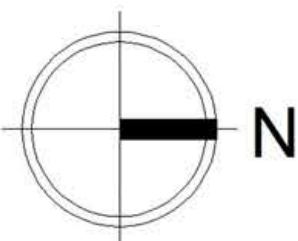
Business  **Suites**
Designed for business brilliance.

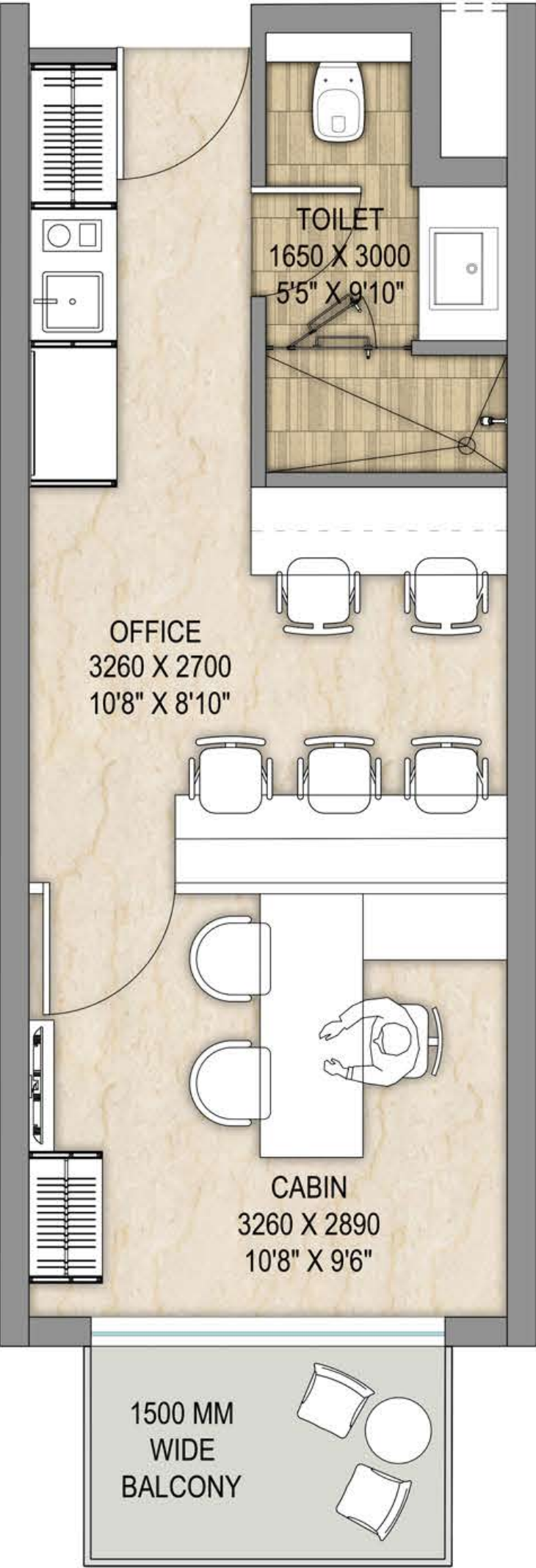
Sky View of Building



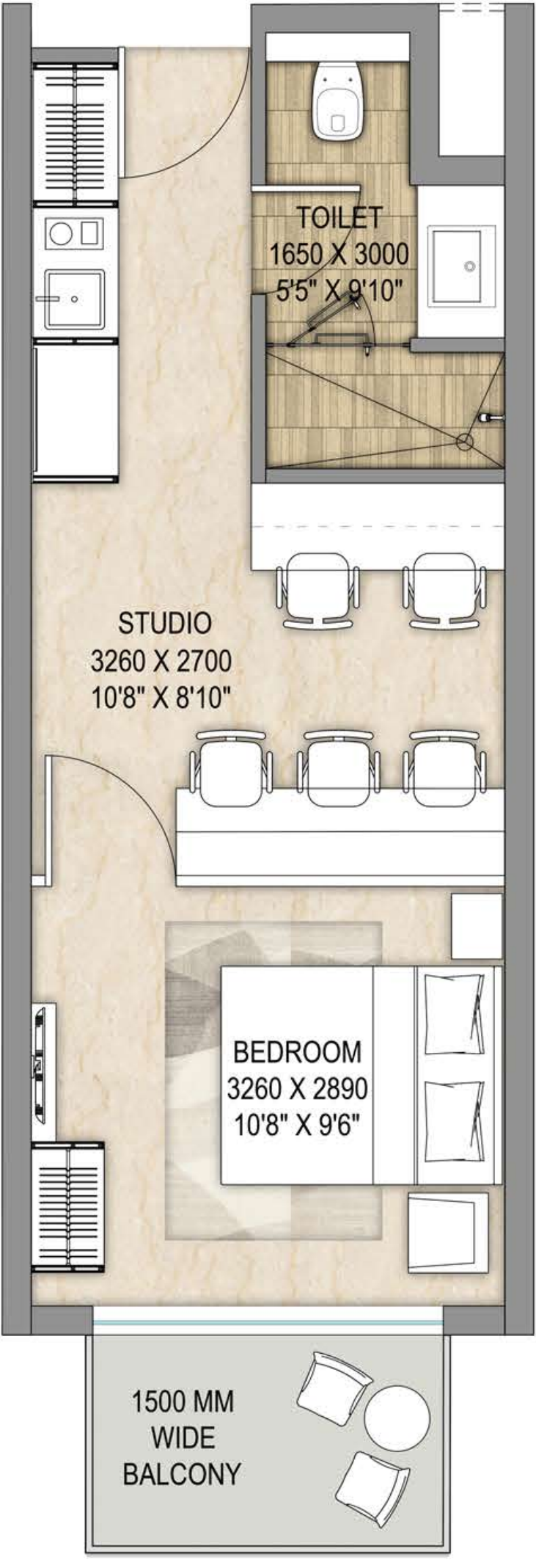


Saleable Area - 686 Sqft





Work & Work Concept Layout
Saleable Area - 686 Sq. ft.



Live & Work Concept Layout
Saleable Area - 686 Sq. ft.

Business  Suites
Designed for business brilliance.

Main View of The Building







A Trend-setter
Real Estate Player
That Epitomizes

People, Partnerships
And Performance

Constructed on the cornerstone of Competitiveness, Energy and Resilience, the Ganpati Group is a leading name in the real estate arena of India. Based out of land of the Taj, Agra, Ganpati Group has spread its wings in varied sectors from Real Estate to building successful commercial properties. Over it's years of triumphant existence, the group has delivered some remarkable projects that have made Ganpati Group synonymous with trust and integrity.

When pioneering minds come together innovation happens! Under the helm of a robust team the group has traversed geographical boundaries and businesses across India. An eye on the future of real estate and creating new standards in construction, the team's zest for advancement is replicated in every project Ganpati Group has constructed.

The group strives to make a mark on every life they touch, from specializing in making your dream home to creating a class apart residential and commercial projects for the masses. The group is all set to embark on a journey fueled by the drive to create infrastructure that is profitable and attracts people from all walks of life.