



**GANPATI INFRASTRUCTURE
DEVELOPMENT COMPANY LTD. (GIDCO)**

Corp. Office: Ganpati square 94,
Vijay Nagar Colony, Agra 282004

Site Address - Pocket F, Vibuti Khand,
Gomti Nagar, Lucknow

Helpline No. - 999 777 0002

www.ganpatigroupindia.com

Business Suites
Designed for business brilliance.

The Rise of Emerging Service Suites





Capital Court is a world-class complex, strategically situated in the heart of Vibhuti Khand, Gomti Nagar, Lucknow, offering unparalleled proximity to high-class residential neighborhoods as well as premium retail and office spaces. This prime location fosters a sophisticated environment, making it an ideal choice for businesses, professionals, and entrepreneurs seeking a perfect blend of luxury, convenience, and functionality.

The complex is well-connected to key areas of the city, ensuring seamless access for both residents and businesses. Its central position makes it an ideal hub for high-profile ventures and thriving enterprises. Designed with the needs of modern businesses in mind, **Capital Court** offers an upscale, dynamic atmosphere that encourages collaboration, growth, and success.

Whether for work, meetings or leisure, the surrounding environment complements the complex's world-class amenities, creating a perfect balance of productivity and relaxation. With its top-tier business infrastructure, elegant living spaces, and excellent accessibility, **Capital Court** is the premium choice for those seeking to succeed in an urban, high-end setting.



Business Suites offer a seamless blend of work and living spaces, designed for entrepreneurs, professionals, and business owners who seek to work and reside within the same environment. This innovative concept enhances productivity, convenience, and leisure, by integrating high-end office facilities with meticulously crafted residential units, all complemented by a world-class clubhouse.

This combination allows for a balanced, efficient lifestyle, eliminating the need for commuting between separate locations. With workspaces and relaxation zones just steps away, professionals can focus on their business goals while enjoying the comfort and luxury of their living spaces. Whether it's for meetings, work, or unwinding, the design fosters a dynamic, productive lifestyle, effortlessly blending business and leisure in one harmonious setting.





1 ECO- FRIENDLY
TERRAIN



2 SMART
NEIGHBOURHOOD



3 EASY ACCESS
TO AIRPORT



4 METRO
CONNECTIVITY



5 SMOOTH ROAD
CONNECTIVITY

Surrounded
By Thriving
Commercial
Atmosphere of

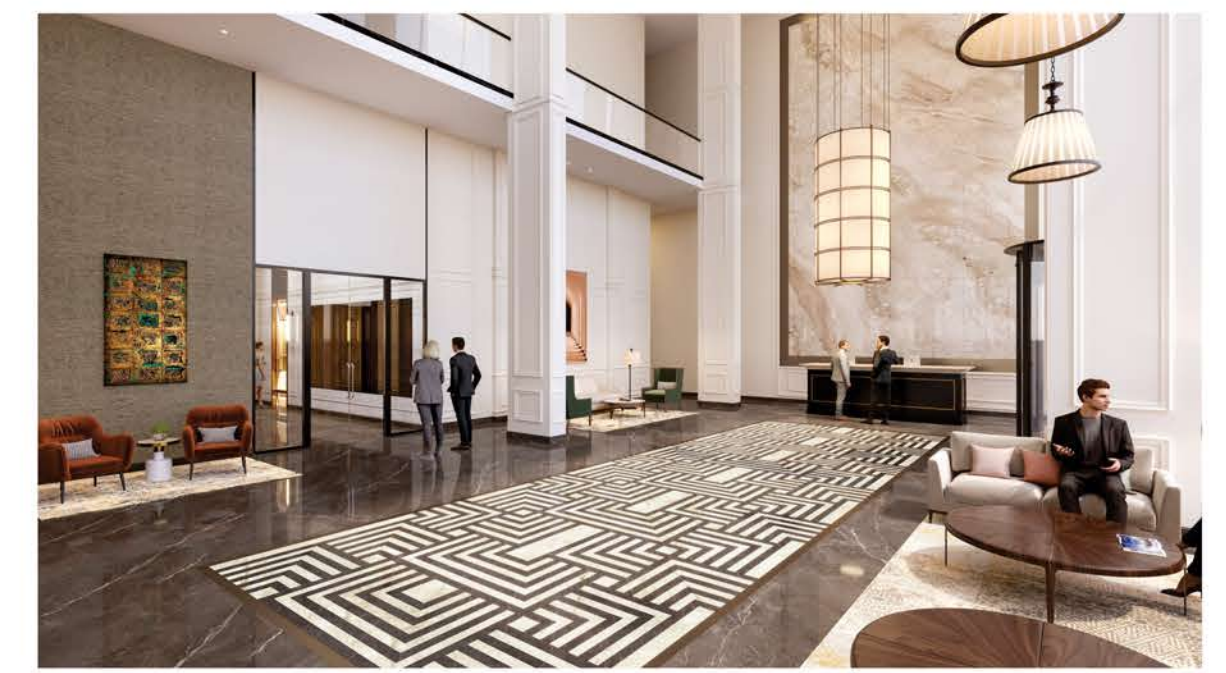
Business  Suites
Designed for business brilliance.

Nestled amidst a vibrant ecosystem of premium business suites, Ganpati Capital Court stands as the new landmark of commercial success in Lucknow. Designed for ambitious professionals and forward-thinking brands, it thrives at the heart of a dynamic commercial corridor - where every square foot is infused with purpose, potential, and progress.



Business Suites
Designed for business brilliance.

Entrance Lobby





Business Suites Entry Plaza



Business Suites - Live & Work Concept View



Business Suites Work & Work Concept View



Business Suites
 Designed for business brilliance.



Amenities chart for 3rd floor

Crafted for the modern professional, our Business Suites in Lucknow offer more than just a workspace - they deliver a thriving environment built for success. From high-speed connectivity and smart infrastructure to concierge services and collaborative zones, every detail is tailored to elevate your workday. With premium amenities and a future-ready design, it's not just a place to work - it's where businesses grow, connect, and lead.

SPECIFICATIONS



EXTERNAL Lobby

Flooring	:	Italian Marble
Walls	:	Velvet Touch Acrylic Emulsion/Textured wallpaper & Wood & fabric panelling for visual interest. Accent walls for added elegance
Ceiling	:	False ceiling with Acrylic Emulsion
Doors	:	Glazed door as/façade
Windows	:	NA
Fixtures/Fittings/Others	:	-



Passenger Lift Lobby

Flooring	:	Italian Marble
Walls	:	Acrylic Emulsion + Full height Italian on Lift Facia
Ceiling	:	False ceiling with Acrylic Emulsion
Doors	:	-
Windows	:	NA
Fixtures/Fittings/Others	:	-



Service Lift Lobby

Flooring	:	Granite
Walls	:	Acrylic Emulsion + Full height Italian on Lift Facia
Ceiling	:	Gypsum Board False Ceiling
Doors	:	Metal Fire Door with SS hardware
Windows	:	NA

Fixtures/Fittings/Others : -



STAIRCASE

Flooring	:	Kota Stone/ Granite
Walls	:	Enamil Paint
Ceiling	:	Plastic Paint
Doors	:	Metal Fire Door with SS hardware
Windows	:	Anodized aluminum pressurization grill

Fixtures/Fittings/Others : -



PANTRY

Flooring	:	Tile
Walls	:	Tile above counter & behind cabinet
Ceiling	:	Gypsum Board False
Doors	:	Wooden Flush door
Windows	:	NA
Fixtures/Fittings/Others	:	-



MEETING ROOM

Flooring	:	Carpet Flooring
Walls	:	Acrylic Emulsion
Ceiling	:	Gypsum Board False Ceiling
Doors	:	Frameless Glazed Door
Windows	:	NA
Fixtures/Fittings/Others	:	-



VESTIBULE

Flooring	:	Granite
Walls	:	Acrylic Emulsion
Ceiling	:	False ceiling with Acrylic Emulsion
Doors	:	Wooden Flush door
Windows	:	NA
Fixtures/Fittings/Others	:	-



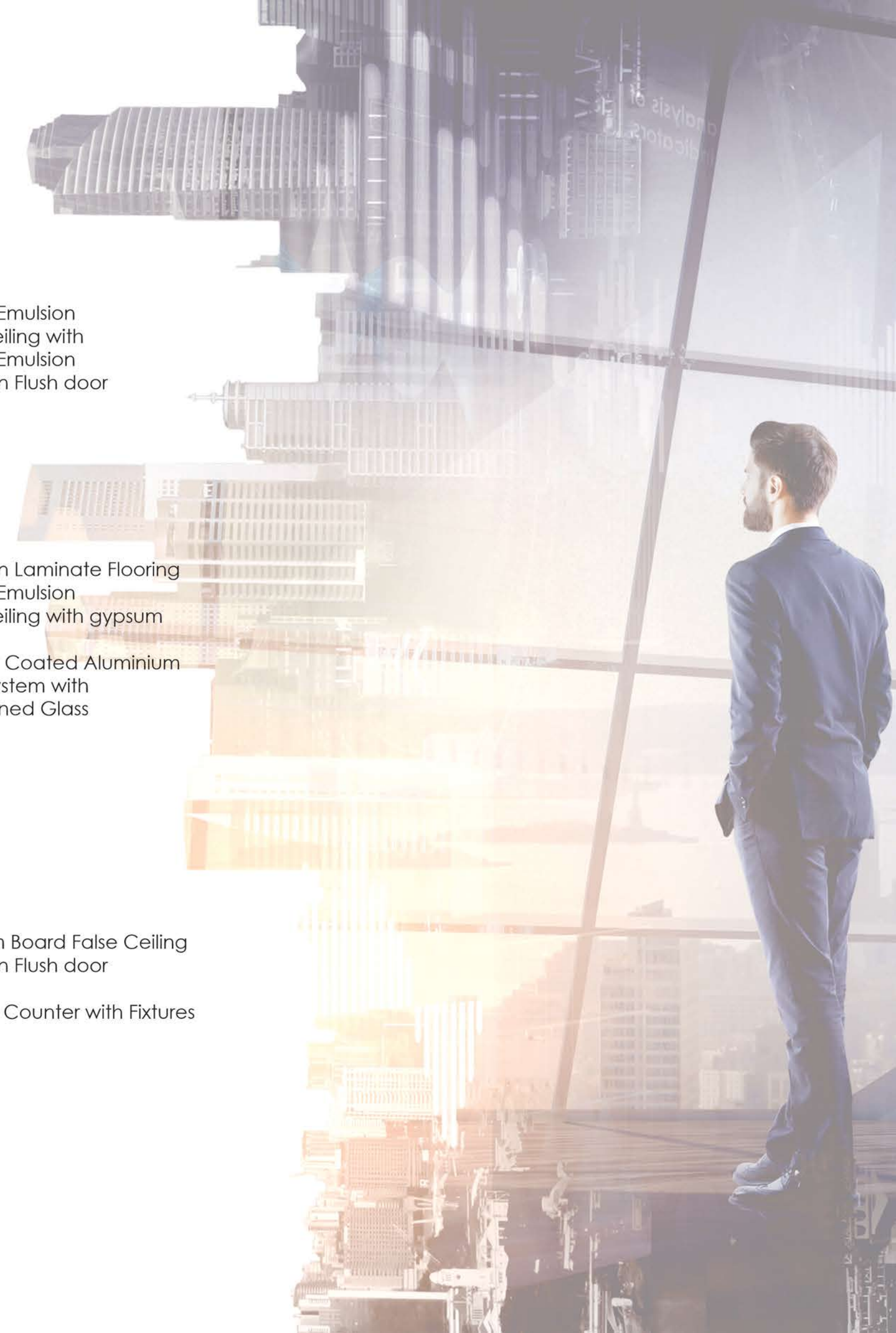
ROOM

Flooring	:	Wooden Laminate Flooring
Walls	:	Acrylic Emulsion
Ceiling	:	False ceiling with gypsum
Doors	:	NA
Windows	:	Powder Coated Aluminium Sleek System with Toughened Glass
Fixtures/Fittings/Others	:	-



TOILET

Flooring	:	Granite
Walls	:	Tiles
Ceiling	:	Gypsum Board False Ceiling
Doors	:	Wooden Flush door
Windows	:	NA
Fixtures/Fittings/Others	:	Granite Counter with Fixtures

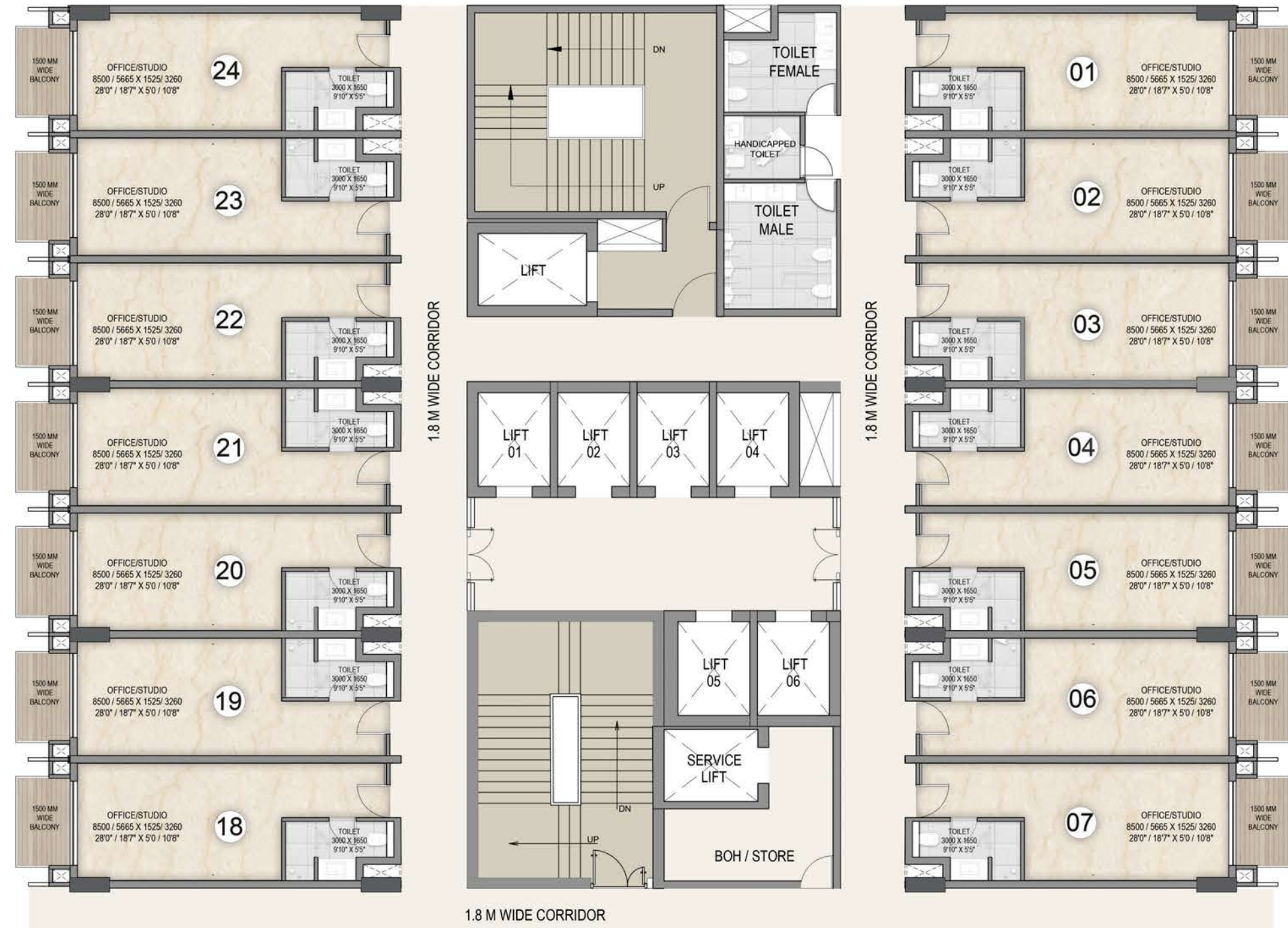


Business Suites
Designed for business brilliance.

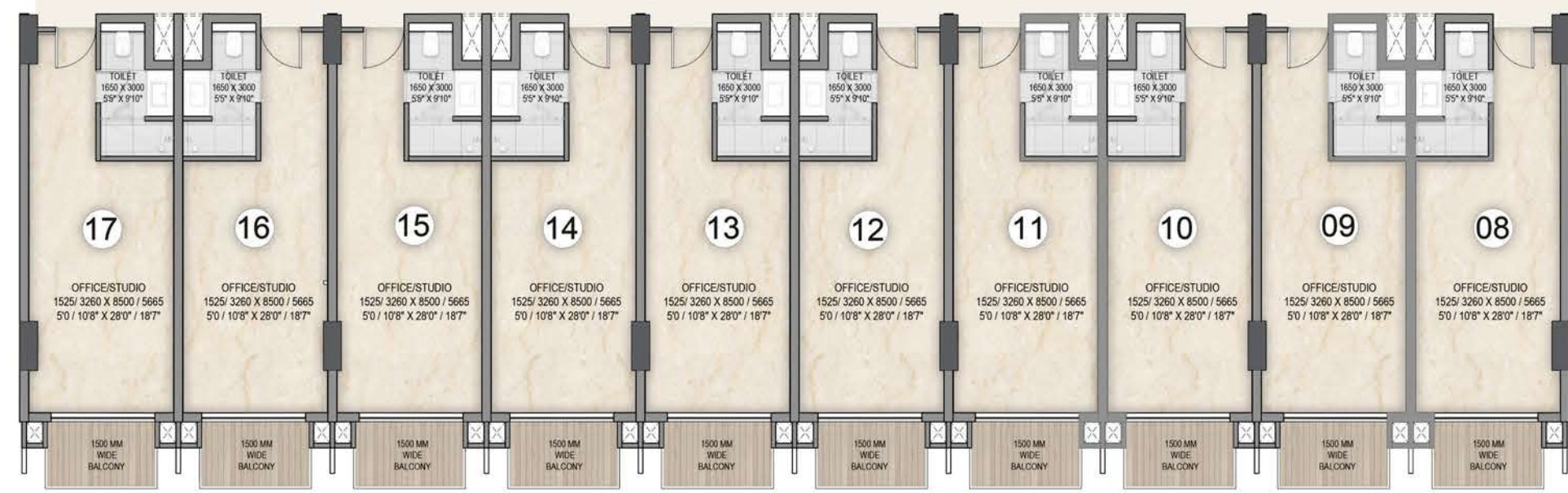
Sky View of Building



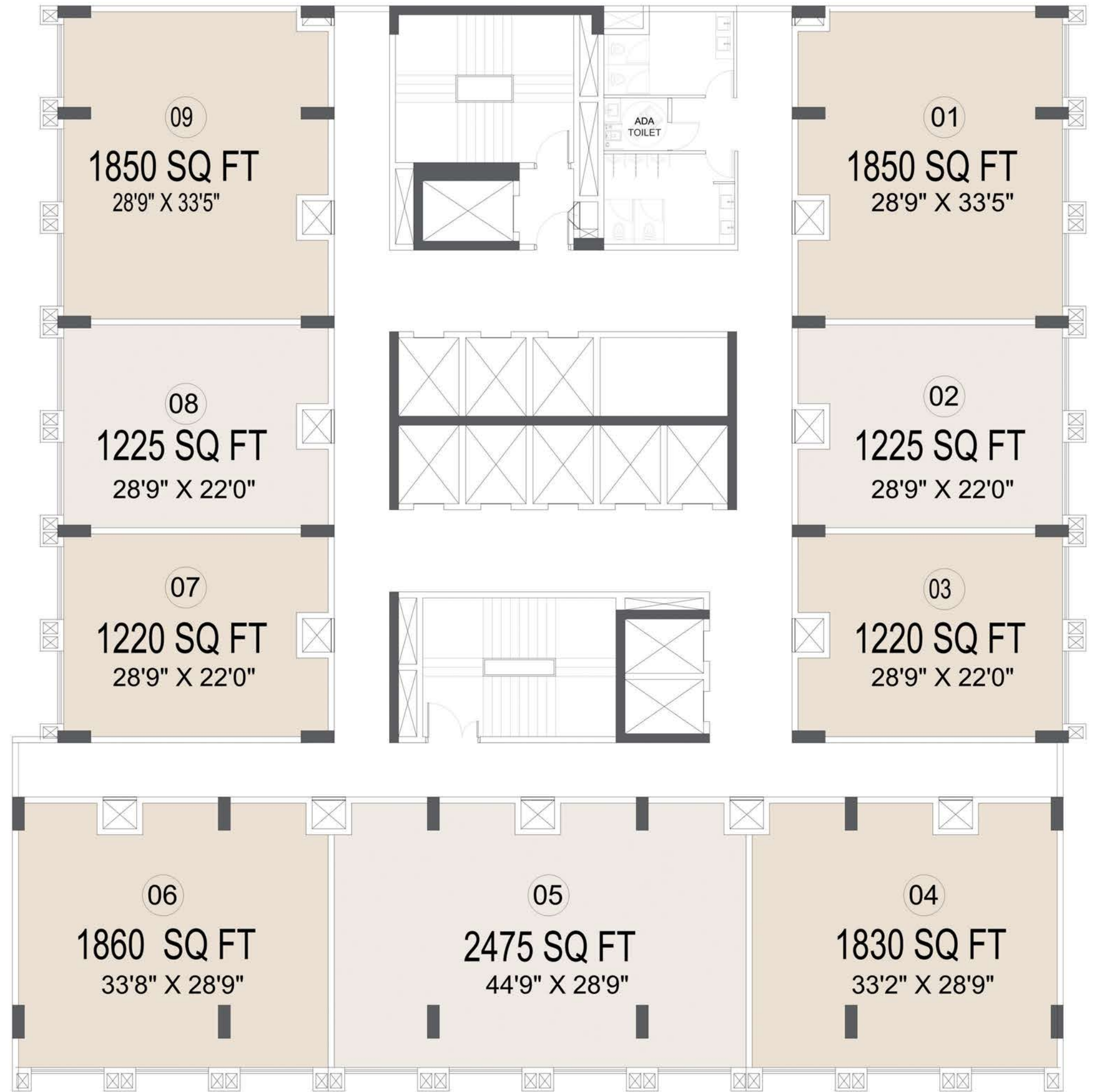
Layout Plan Service Apartment Floor



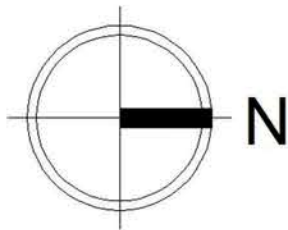
Saleable Area - 686 Sqft

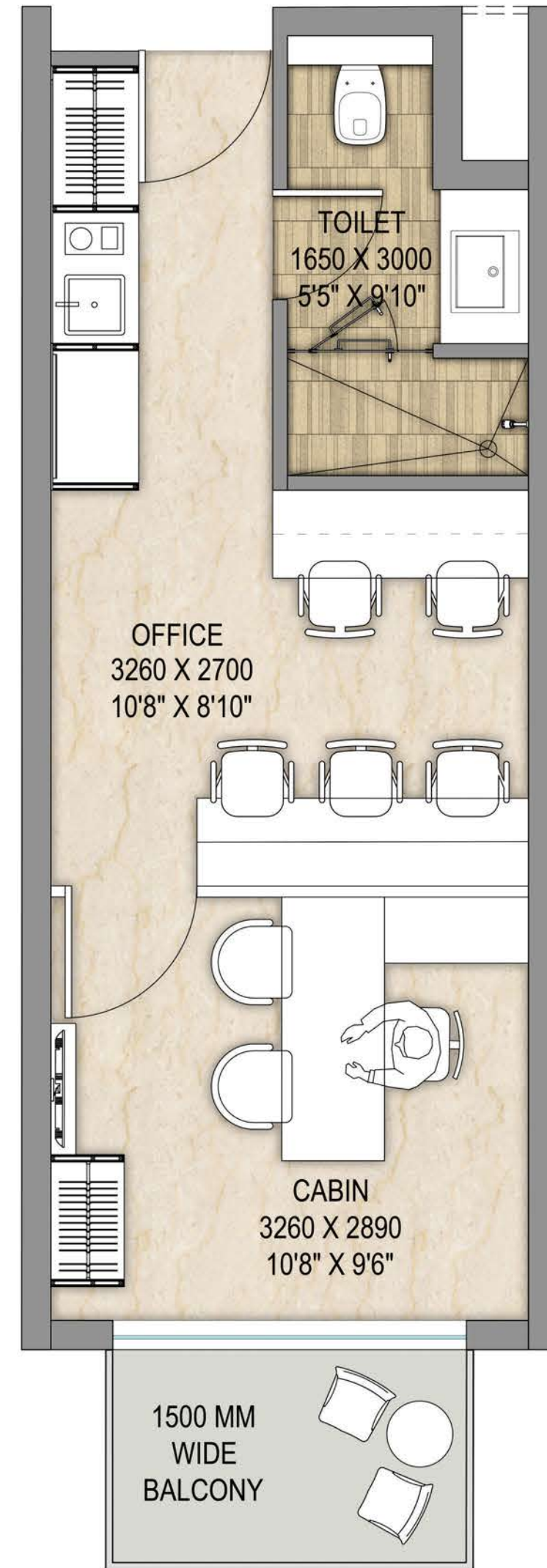


Layout Plan Office Floor

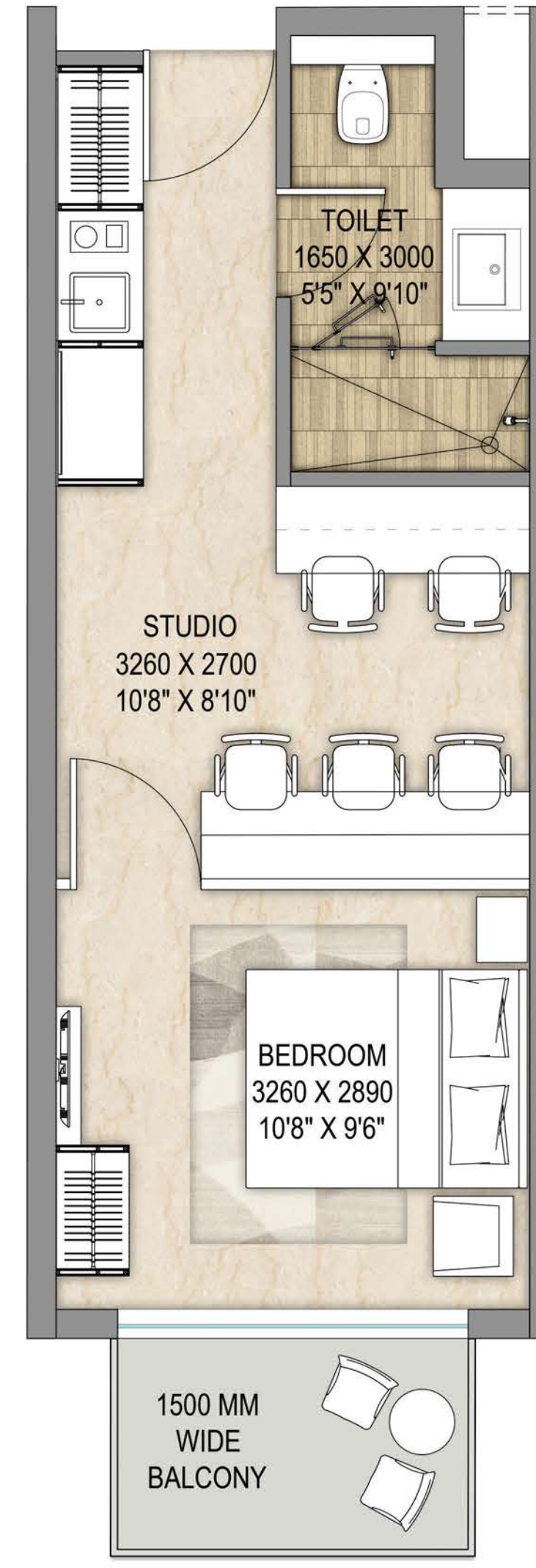


Typical Office - 9 Units





Work & Work Concept Layout
 Saleable Area - 686 Sq. ft.



Live & Work Concept Layout
 Saleable Area - 686 Sq. ft.

Business  Suites
Designed for business brilliance.

Main View of The Building





RUNNING PROJECTS

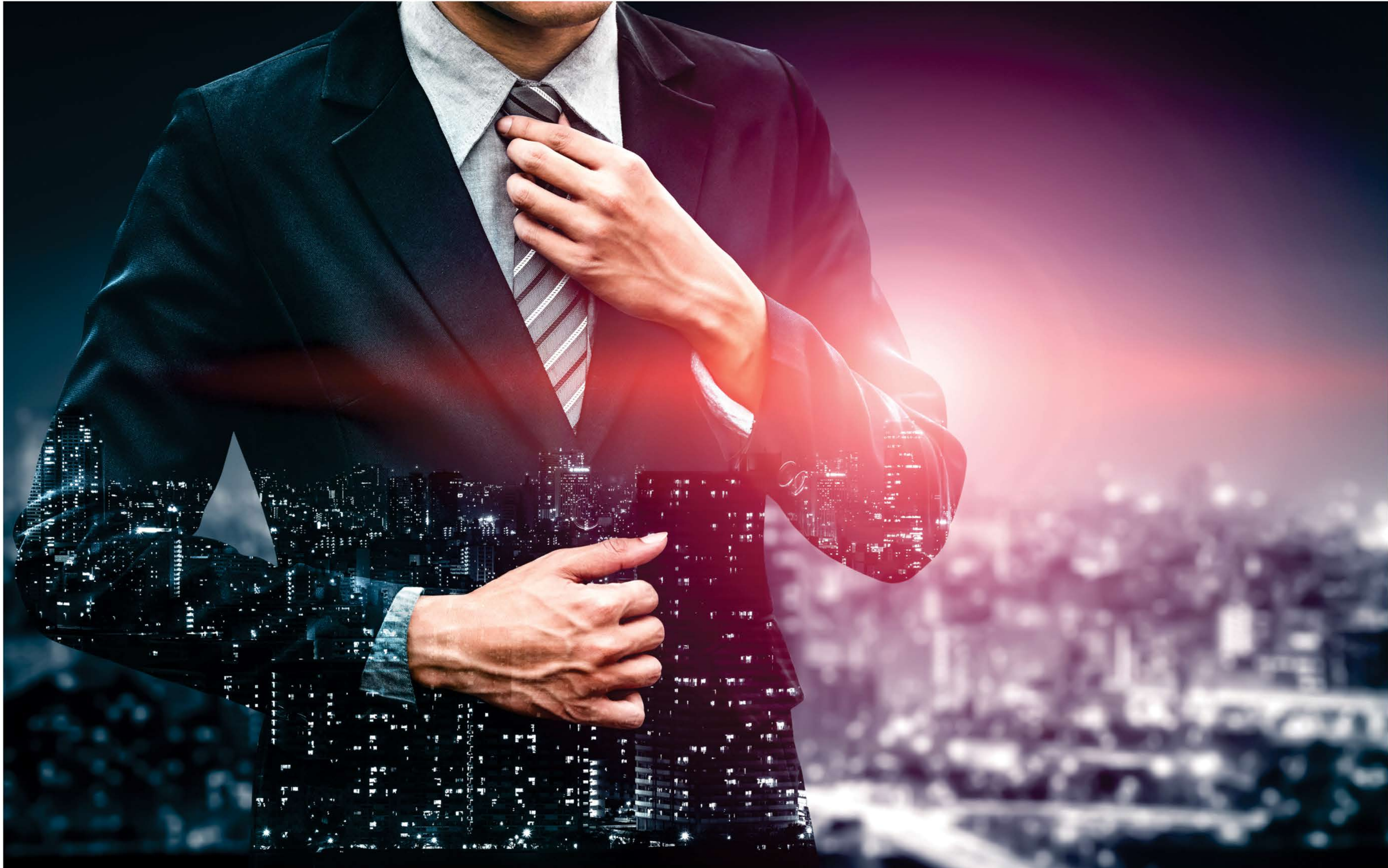
- Ganpati Smart City
- Ganpati Platinum Court
- Ganpati Wonder City
- Ganpati Upvana
- Hyatt Place - Katra J&K

COMPLETED PROJECTS

- Ganpati Magnum Square - Alwar
- Ganpati World
- Ganpati World II
- Ganpati Dham
- Ganpati Infinity
- Ganpati Classique
- Ganpati City
- Ganpati Galaxy
- Ganesh Plaza
- Ganpati Ashiyana
- Ganpati Apartment
- Ganpati Tower
- Ganpati Kings County
- Ganpati Divine Homes
- Sarovar Premiere - Alwar

UPCOMING PROJECT

- Radisson Blue Hotel - Lucknow
- Sarovar Premiere - Lucknow
- Hyatt Hotel - Agra
- Ganpati Manhattan - Agra



A Trend-setter Real Estate
Player That Epitomizes

People, Partnerships and
Performance

Constructed on the cornerstone of Competitiveness, Energy and Resilience, the Ganpati Group is a leading name in the real estate arena of India. Based out of the land of the Taj, Agra, Ganpati Group has spread its wings in varied sectors — from real estate to successful commercial developments. Over its years of triumphant existence, the group has delivered landmark projects that have made the Ganpati name synonymous with trust and integrity.

When pioneering minds come together, innovation happens. Under the helm of a robust leadership team, the group has traversed geographical boundaries and diversified into multiple sectors across India. With a future-focused mindset and a passion for excellence, Ganpati Group continues to raise benchmarks in construction and design.

While real estate remains the group's core strength, Ganpati Group has also made impactful strides into the hospitality and healthcare sectors — developing state-of-the-art hotels and medical infrastructure that cater to evolving lifestyles and community wellbeing. These ventures reflect the group's deep-rooted commitment to enriching lives and building holistic ecosystems.

From crafting dream homes to curating exceptional commercial spaces, Ganpati Group aims to make a lasting difference in every life it touches. Now poised for a bold new chapter, the group is driven by a vision to create infrastructure that is innovative, inclusive, and built to endure.

IN COLLABORATION WITH INDIA'S BEST



(MEP CONSULTANT)



(RESIDENT ARCHITECT)



(STRUCTURAL CONSULTANT)



(LIGHTING CONSULTANT)



(LANDSCAPE CONSULTANT)



(GRAPHIC & BRANDING)



Disclaimer: The views shown in the pictures may vary over the period and do not guarantee the same. All intending purchasers (s) are bound to inspect all plans and approvals visit the project site and apprise themselves of all plans and approvals and other relevant information obtained from time to time from respective authorities. The promoter holds no responsibility for its accuracy and shall not be liable to any intending purchaser or anyone for the changes/ alterations/ improvements so made.

The visual representation shown in this brochure is purely conceptual and not a legal offering. All images, plans, specifications, site plans, layout plans, etc are tentative and subject to variation and modification by the company or the competent authorities sanctioning plans.